

Sonate

C major

J.S. BACH
BWV 1033

Andante

flute

cello

3

6

9

12

16

Presto

Presto

20

Measures 20-22 of a musical score. The treble clef staff contains a continuous eighth-note melody. The bass clef staff contains a single whole note per measure, which is a half-octave below the treble staff's notes.

23

Measures 23-25 of a musical score. The treble clef staff continues with eighth-note patterns. The bass clef staff has whole notes, with a key signature change to one sharp (F#) in measure 25.

Allegro

Measures 26-28 of a musical score. The treble clef staff is labeled 'flute' and contains eighth-note patterns. The bass clef staff is labeled 'cello' and contains a steady eighth-note accompaniment. The time signature is 3/4.

4

Measures 29-31 of a musical score. The treble clef staff features eighth-note patterns with some rests. The bass clef staff continues with a steady eighth-note accompaniment.

7

Measures 32-34 of a musical score. The treble clef staff has eighth-note patterns with key signature changes. The bass clef staff has a steady eighth-note accompaniment.

10

Measures 35-37 of a musical score. The treble clef staff continues with eighth-note patterns. The bass clef staff has a steady eighth-note accompaniment.

13

Measures 38-40 of a musical score. The treble clef staff has eighth-note patterns with key signature changes. The bass clef staff has a steady eighth-note accompaniment.

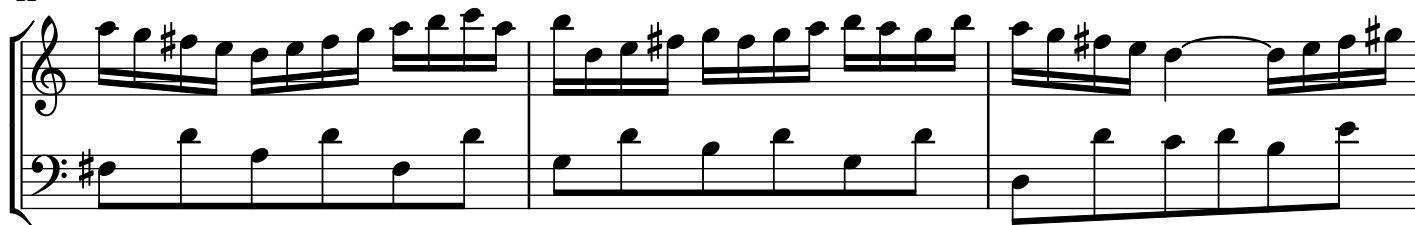
16



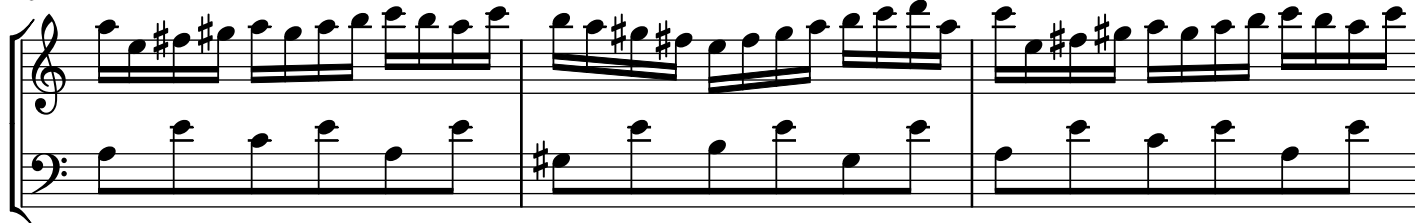
19



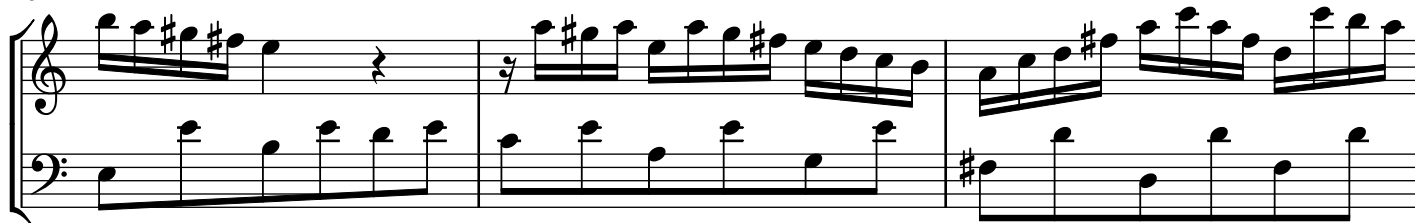
22



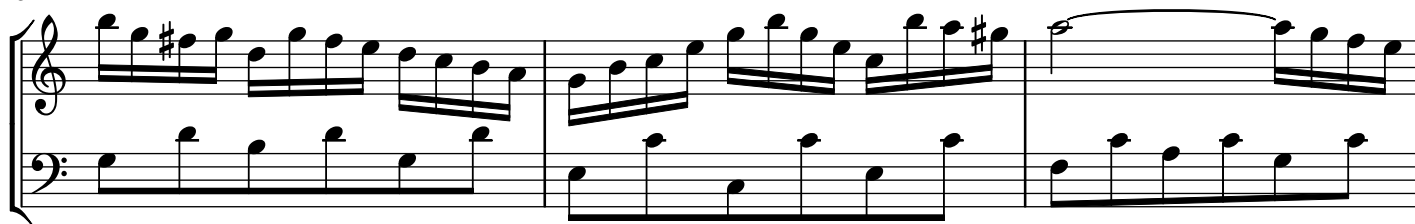
25



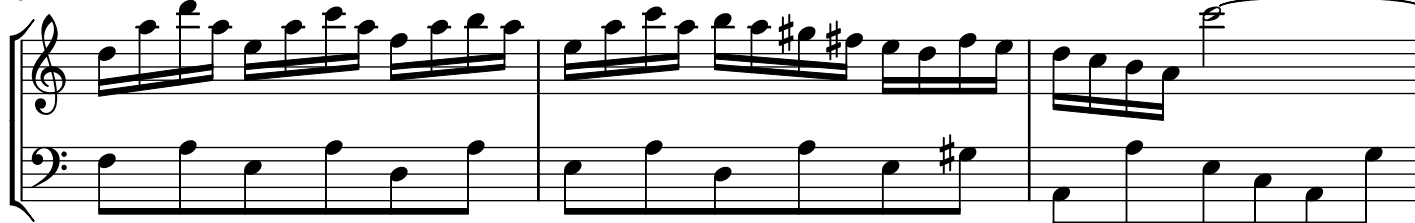
28



31



34



37

40

43

46

Adagio

flute

cello

3

5

7

Measures 7 and 8 of a musical piece. The treble clef staff contains a melody with eighth and sixteenth notes, including a sharp sign. The bass clef staff provides a harmonic accompaniment with eighth notes and a flat sign.

9

Measures 9 and 10 of a musical piece. The treble clef staff features a more complex melody with many beamed sixteenth notes and a sharp sign. The bass clef staff continues the accompaniment with eighth notes and a sharp sign.

11

Measures 11 and 12 of a musical piece. The treble clef staff includes a trill (tr.) and many beamed sixteenth notes. The bass clef staff has a steady eighth-note accompaniment.

Menuet I

flute

cello

Measures 1 through 8 of Menuet I. The flute part (treble clef) has a trill (tr.) in measure 1. The cello part (bass clef) provides a simple harmonic accompaniment. The key signature has one sharp (F#) and the time signature is 3/4.

9

Measures 9 through 16 of Menuet I. The flute part includes trills (tr.) in measures 9 and 13. The cello part continues the accompaniment. The piece ends with a double bar line and repeat dots.

Menuet II

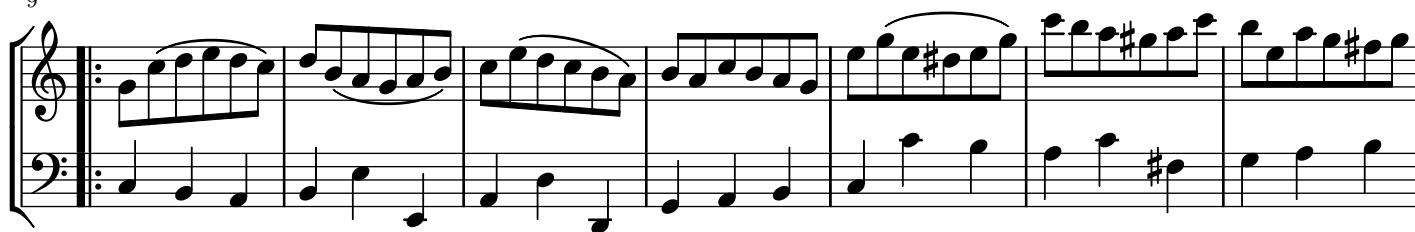
flute

cello

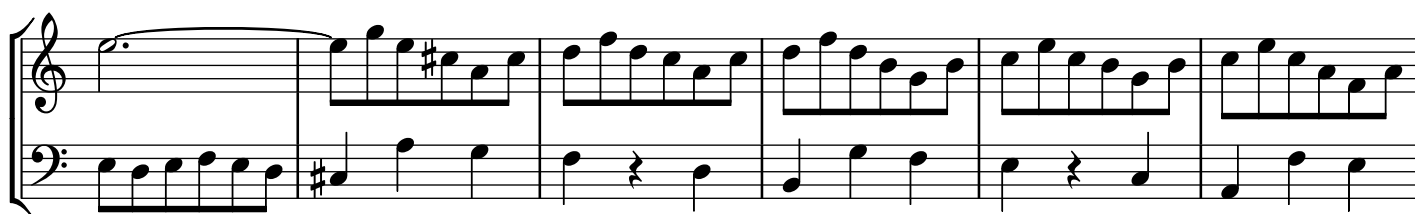
Measures 1 through 8 of Menuet II. The flute part (treble clef) has a trill (tr.) in measure 2. The cello part (bass clef) provides a simple harmonic accompaniment. The key signature has one sharp (F#) and the time signature is 3/4. The piece ends with a first and second ending bracket.

6

9



16



22

