

# Partita I

## Clavierübung part I

J. S. BACH  
BWV 825

3. Corrente

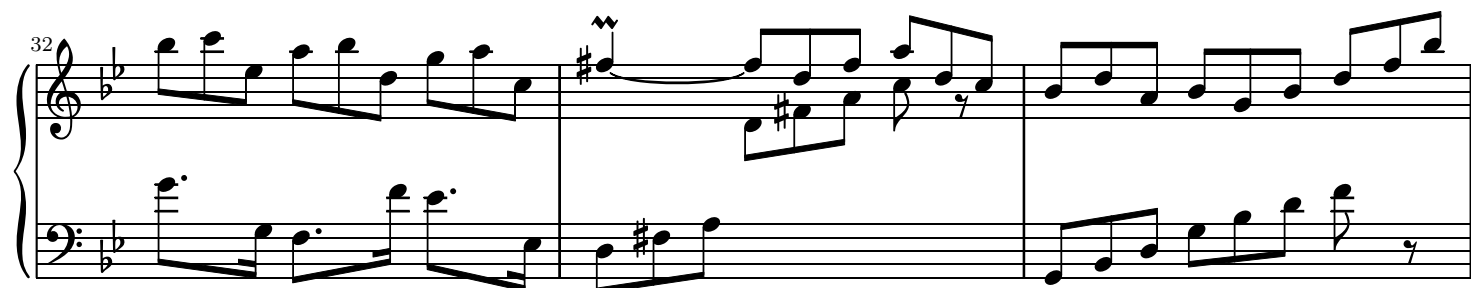
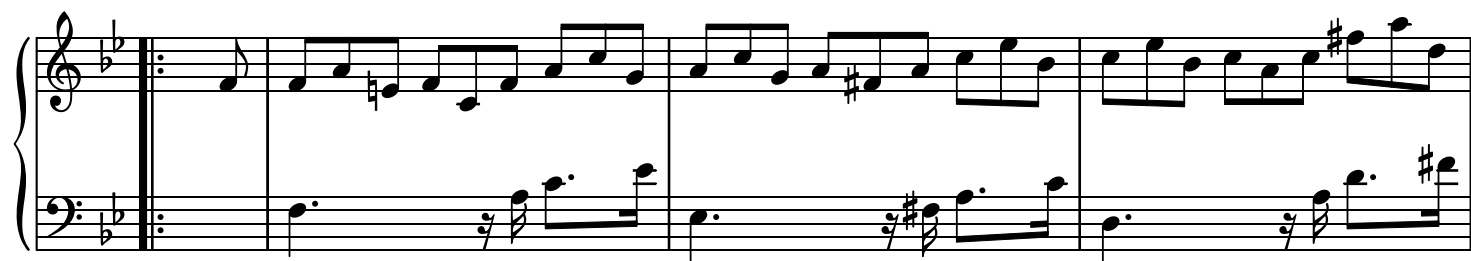
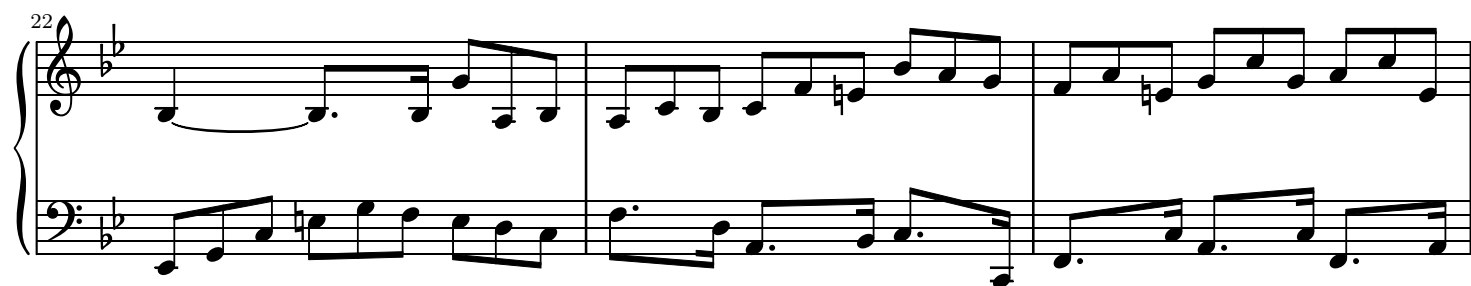
The first system of the 3. Corrente, measures 1-3. The music is in G minor (three flats) and 3/4 time. The treble clef staff features a series of eighth-note runs, while the bass clef staff provides a steady accompaniment of dotted half notes with a rhythmic flourish (a sixteenth note followed by an eighth note) at the end of each measure.

The second system of the 3. Corrente, measures 4-6. The treble clef staff continues with eighth-note patterns, including a half-note rest in measure 5. The bass clef staff features a more active line with eighth-note runs and a half-note rest in measure 5.

The third system of the 3. Corrente, measures 7-9. The treble clef staff shows a melodic line with some chromaticism, including a natural sign on the B in measure 8. The bass clef staff continues with eighth-note accompaniment.

The fourth system of the 3. Corrente, measures 10-12. The treble clef staff features a continuous eighth-note melody. The bass clef staff provides a consistent eighth-note accompaniment.

The fifth system of the 3. Corrente, measures 13-15. The treble clef staff includes trills in measures 13 and 15. The bass clef staff continues with the eighth-note accompaniment pattern.



35

Measures 35-37 of a musical score in B-flat major. The treble clef staff features a melody with eighth and sixteenth notes, including a triplet in measure 35. The bass clef staff provides a harmonic accompaniment with eighth and sixteenth notes. Measure 37 ends with a repeat sign.

38

Measures 38-40 of a musical score in B-flat major. The treble clef staff continues the melody with eighth and sixteenth notes. The bass clef staff features a more active accompaniment with sixteenth notes and a key signature change to C major in measure 40.

41

Measures 41-43 of a musical score in C major. The treble clef staff has a melody with eighth and sixteenth notes. The bass clef staff continues the accompaniment with eighth and sixteenth notes. Measure 43 ends with a repeat sign.

44

Measures 44-46 of a musical score in C major. The treble clef staff features a melody with eighth and sixteenth notes. The bass clef staff provides a harmonic accompaniment with eighth and sixteenth notes. Measure 46 ends with a repeat sign.

47

Measures 47-49 of a musical score in C major. The treble clef staff has a melody with eighth and sixteenth notes, including a triplet in measure 47. The bass clef staff continues the accompaniment with eighth and sixteenth notes. Measure 49 ends with a repeat sign.

50

Measures 50-52 of a musical score in C major. The treble clef staff features a melody with eighth and sixteenth notes, including a triplet in measure 50. The bass clef staff provides a harmonic accompaniment with eighth and sixteenth notes. Measure 52 ends with a repeat sign.

53

56

The image displays a musical score for piano, consisting of two systems of staves. The first system, labeled '53', contains three measures. The second system, labeled '56', contains four measures. The music is written in a key signature of two flats (B-flat and E-flat) and a common time signature. The notation includes various musical symbols such as treble and bass clefs, notes, rests, and dynamic markings like 'f' (forte) and 'p' (piano). The score concludes with a double bar line and repeat dots.